

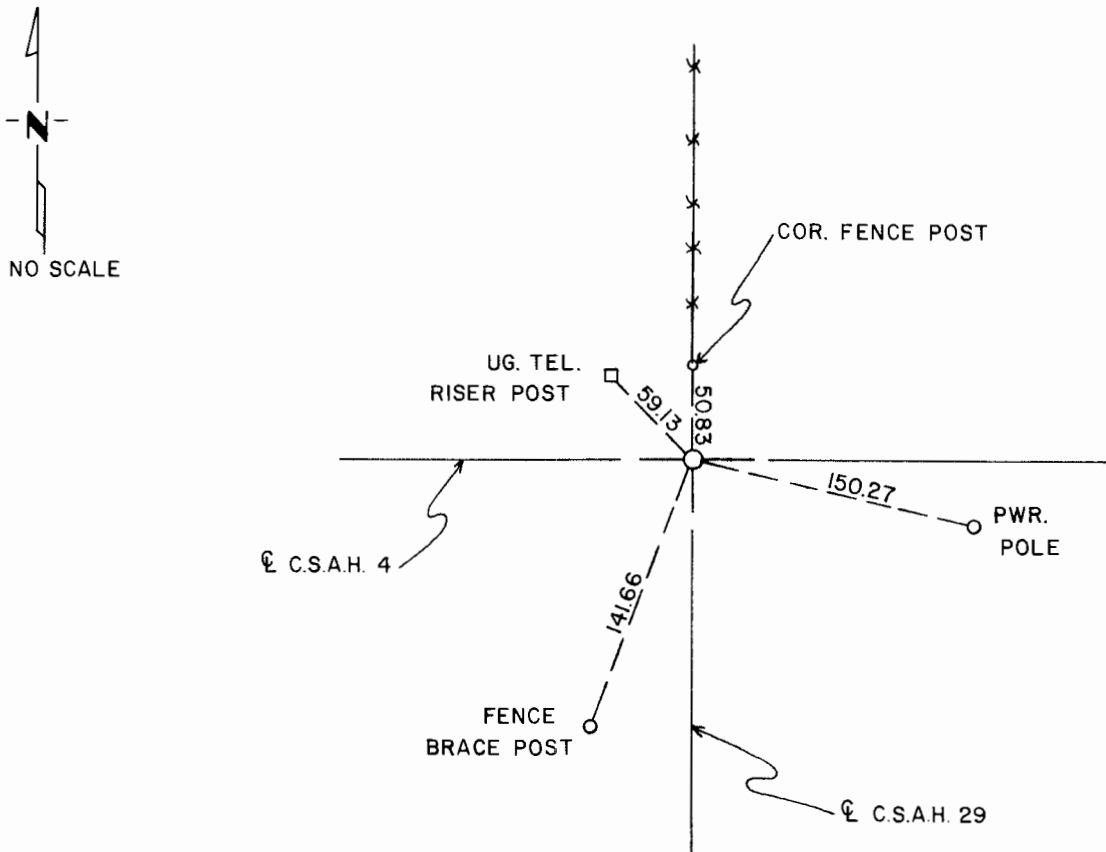
CERTIFICATE OF LOCATION OF GOVERNMENT CORNER

SOUTHEAST Corner of Section 3, Township 105 N., Range 42 W., 5th P.M.
 STATE OF MINNESOTA, County of MURRAY

At the corner location shown on the sketch:

- On 4/3/78 found a 1/2" iron bar at surface of bituminous road
DATE
centerline intersection (east-west and south)
 - left monument as found, lowered monument, removed monument (explain)
- On _____ placed a _____
DATE

SKETCH OF REFERENCE TIES



Statement of evidence relative to this corner location is on back of page.

I hereby certify that this document and the data contained herein was prepared by me or under my direct supervision.

Henry D. N. [Signature] 6/19/78
SIGNATURE DATE

Registration No. 12967

- Land Surveyor, Professional Engineer
- County Surveyor, County Engineer

OFFICE OF THE REGISTER OF DEEDS
 County of MURRAY

I hereby certify that this document was filed in the Reg. of Deeds office at _____ .M. on the _____ day of _____ A.D., 19 _____

Register of Deeds _____

By _____, Deputy

DOCUMENT NO. _____

Statement of Evidence:

G.L.O. - Survey by D. W. Wellman and S. S. Smoot; completed Sept. 1861; "made mound with trench and pits as per instructions".

Subsequent Resurvey - Murray County Highway Engineer-"Surveyor's Record Book":

1. May 11, 1898; J. W. Woolstencroft; "Stone (Gov.) mound and pits".
2. 1956; "Concrete Stone"; no statement pertaining to who set this monument or how it was set.
3. April, 1971; "Conc. cylinder with "X"; R.R. spike above".
4. July 6, 1973; "steel pin in 3" bituminous overlay"; set over monument found per 3.

Found steel pin matching ties given per 4. above; accepted as perpetuation or proper remonumentation of original government corner; made new set of ties as noted on reverse side of this sheet.

164263

State of Minnesota }
County of Murray, }

I hereby certify that the within instrument was filed in this office for record on the

7th day of August A.D. 1981,

at 8:30 o'clock P. M., and was duly recorded as Microfilm Document No. 164263

Willard W. Ohme
County Recorder